

PACIFIC SHORES MEDICAL GROUP ONCOLOGY *on Canvas*



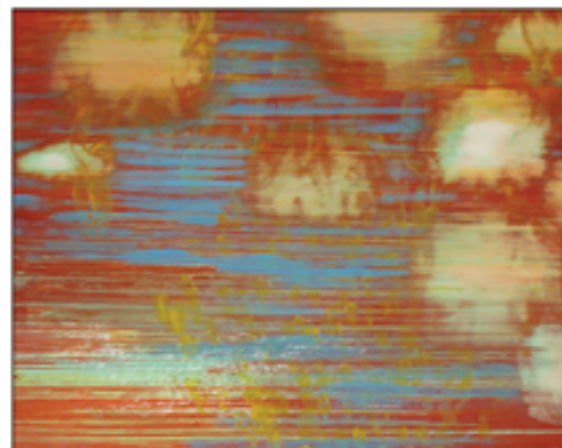
Rebecca Herbst, actor on the daytime drama series "General Hospital," participates in the event.

Fifty of over 2,000 paintings created by cancer survivors from around the world for Lilly Oncology on Canvas International Art Competition and Exhibition went on display in June 2007 at Pacific Shores Medical Group's Long Beach and Glendale offices.

The free exhibit featured works from patients, their family members, caregivers, and healthcare providers from around the world. "I found the art exhibit extremely valuable," said Dr. Kalust Ucar.

"One of the most exciting highlights was the opportunity to display some artwork from patients around the world. We are looking forward to having more Pacific Shores' patients participate in the event in 2008," says Jann Buaiz, MS, program coordinator of the event.

The program was launched by Eli Lilly in partnership with the National Coalition for Cancer Survivorship to help people challenged by cancer deal with the emotional side effects of the disease.



For more information, please visit our website at www.pacshoresoncology.com

OUR PHYSICIANS PRACTICE AT THE FOLLOWING HOSPITALS & OFFICES:

Garfield Medical Center, Monterey Park • Glendale Adventist Medical Center, Glendale • Glendale Memorial Medical Center, Glendale • Hoag Memorial Hospital Presbyterian, Newport Beach • Long Beach Memorial Medical Center, Long Beach • Los Alamitos Medical Center, Los Alamitos • Orange Coast Memorial Medical Center, Fountain Valley • Pacific Hospital, Long Beach • San Gabriel Valley Medical Center, San Gabriel • St. Mary Medical Center, Long Beach • Verdugo Hills Hospital, Glendale

Long Beach
1043 Elm Avenue, #104
Long Beach, CA 90813
(562) 590-0345
Fax: (562) 437-8139

Los Alamitos
3791 Katella Avenue, #205
Los Alamitos, CA 90720
(562) 430-5900
Fax: (562) 799-8379

Glendale
222 W. Eulalia Street, #100-B
Glendale, CA 91204
(818) 637-7611
Fax: (818) 637-5106

Huntington Beach
19582 Beach Blvd, #212
Huntington Beach, CA 92648
(714) 252-9415
Fax: (714) 963-8407

Monterey Park
600 N. Garfield # 210
Monterey Park, CA 91754
(626) 573-8145
Fax: (626) 573-9431